

C134-289

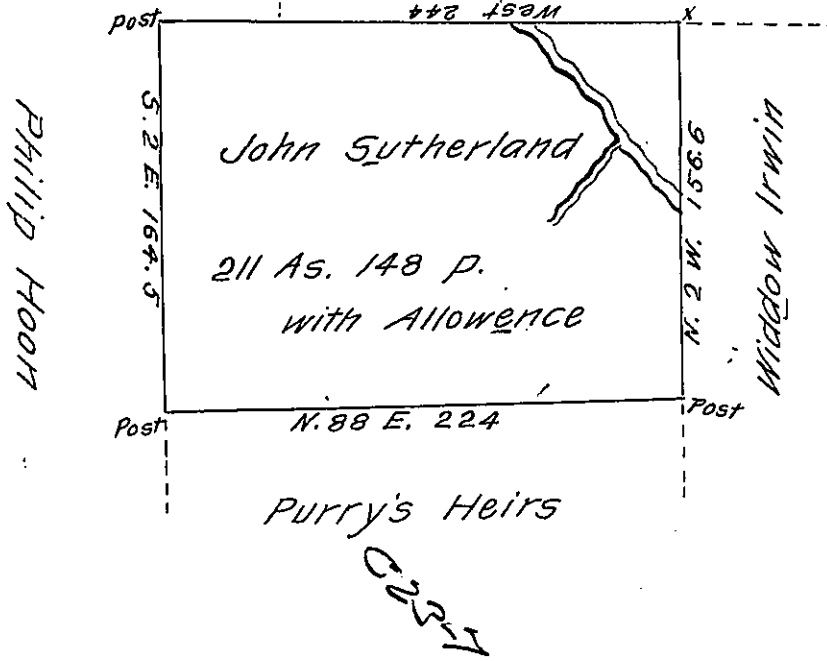
C157 70

Wm Montgomery

Thomas Montgomery

C101-50

C-98-231



Situate in Wolfcreek Township Mercer County on a branch  
of Wolfcreek Containing two hundred & eleven Acres & one hun-  
dred and forty-eight perches & Allowence of six per cent. for  
Roads &c<sup>o</sup> Surveyed for John Sutherland April 28<sup>th</sup> 1840 in  
pursuence of his Actual Settlement and Improvement thereon.

by me,

To Jacob Sallade Esq<sup>r</sup> S.G.

John Findley D.S.

IN TESTIMONY that the above is a copy of the original remaining on file in  
the Department of Internal Affairs of Pennsylvania, made  
conformably to an Act of Assembly approved the 16th day of  
February, 1833, I have hereunto set my Hand and caused  
the Seal of said Department to be affixed at Harrisburg,  
this twentieth day of January 1908.

*Henry Howell*  
Secretary of Internal Affairs.